

A woman with long dark hair is sitting on a wooden bench in a rustic, industrial-style interior. She is wearing a brown, textured coat over a black turtleneck and black leather pants. The background features a weathered wall, a hanging light bulb, and a large speaker on the right. The overall mood is moody and artistic.

# AYASSE

AUTUMN | WINTER 2025




# NU NC HI

THE CONCEPT OF BEING  
PERCEPTIVE AND  
ATTENTIVE TO DETAILS

*It's about stepping back, approaching your  
surroundings with mindfulness, and contributing to a  
harmonious coexistence.*

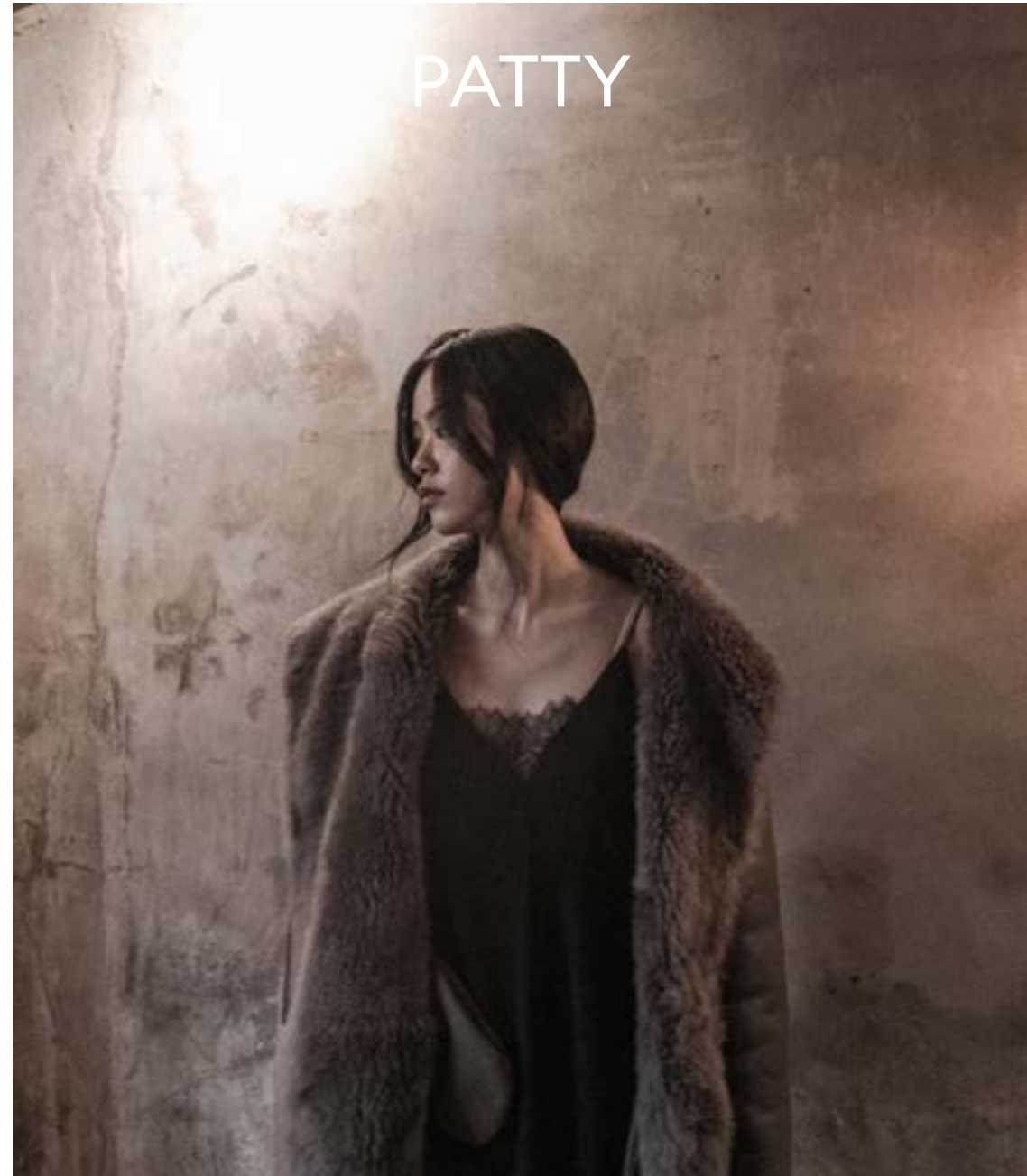




A woman with long dark hair, wearing a white, textured dress, stands in a dimly lit room. She is positioned in the center-left of the frame, looking down. To her right is a large window with a black frame, through which bright light is streaming, creating a strong backlight effect on her hair and dress. The room has a rustic feel with textured, light-colored walls and a dark ceiling. A black track with a single spotlight is visible on the ceiling to the left. The overall mood is contemplative and artistic.

AWARENESS OF YOUR  
OWN SELF, YOUR OWN  
PERSPECTIVE, AND YOUR  
OWN STRENGTH.





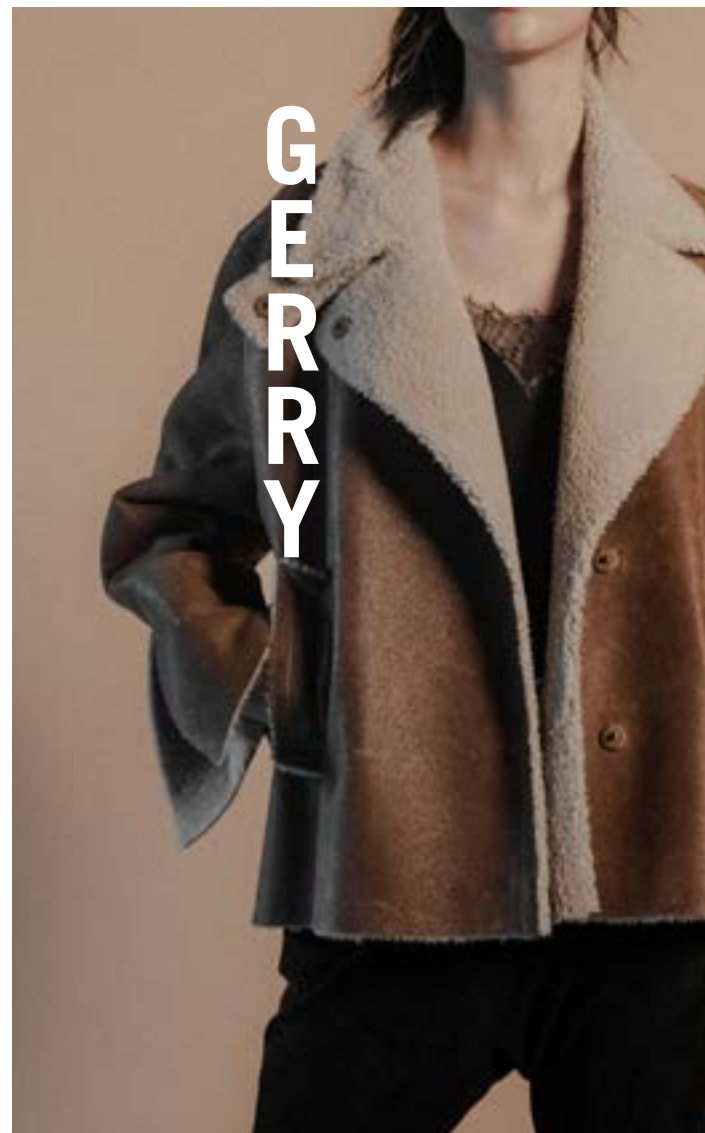












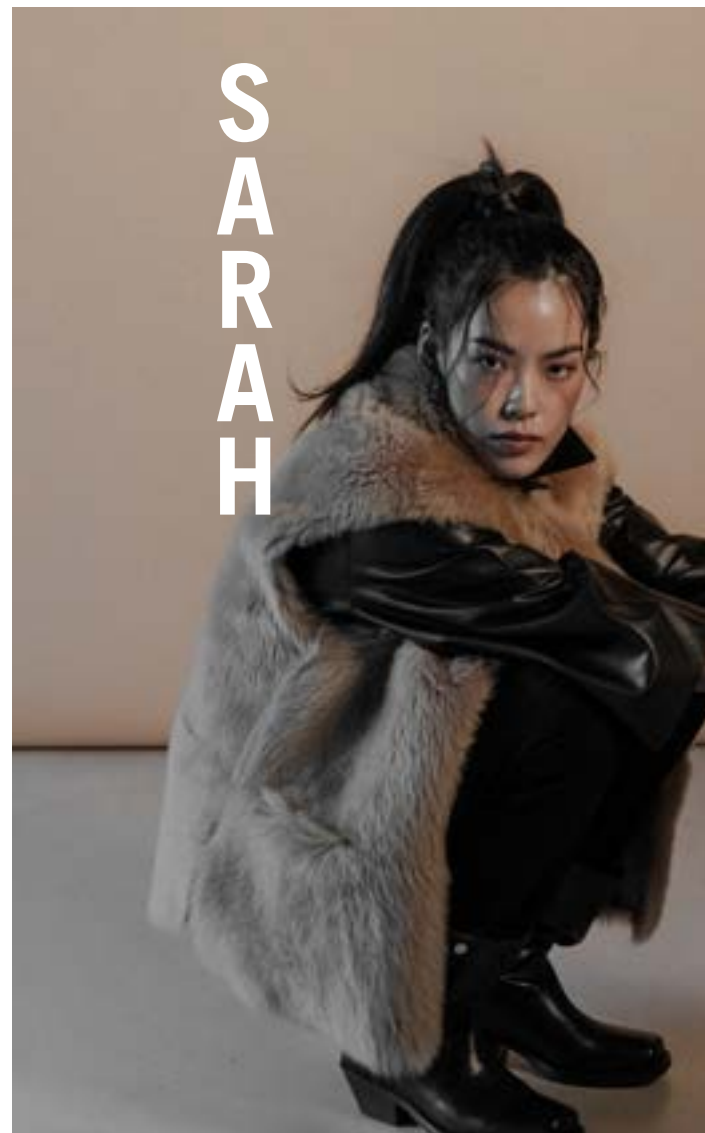












SARAH



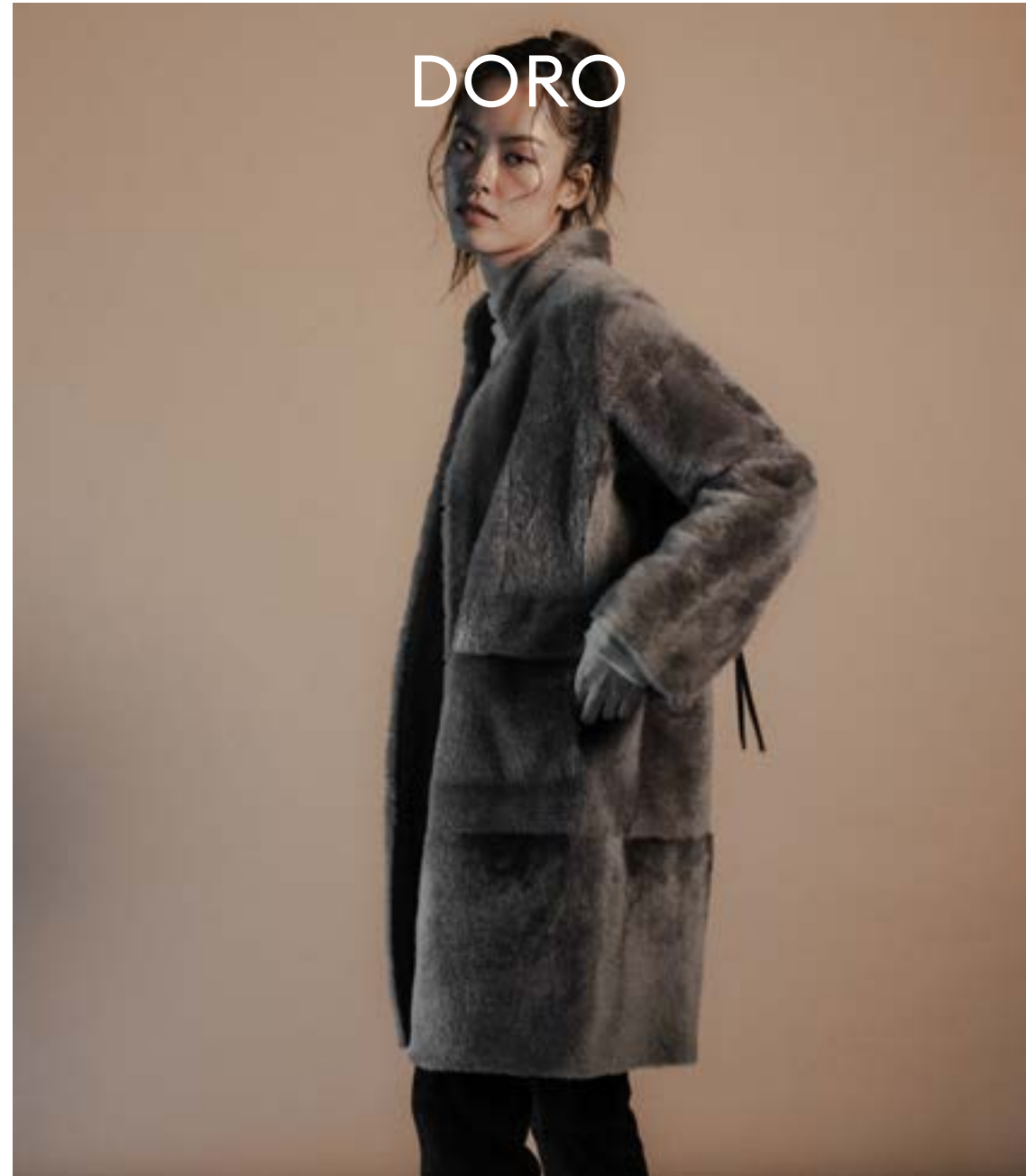






M  
A  
R  
I  
A





DORO









ARDEN

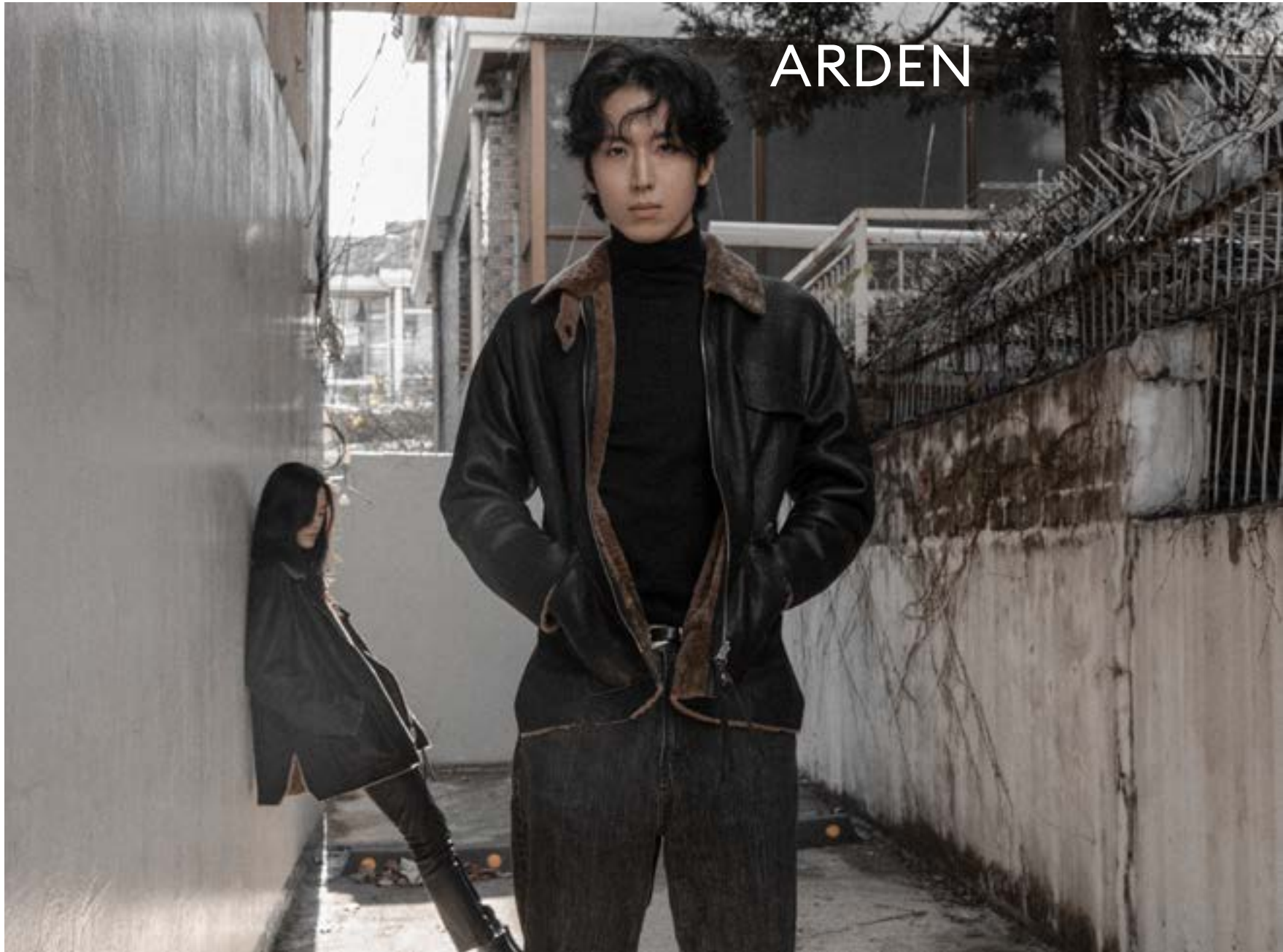








ARDEN















FLORA











A woman with long dark hair, wearing a thick fur coat, stands in a dimly lit room. Behind her is a large, bright, out-of-focus light source, possibly a window or a large lamp, creating a strong backlight effect. To the right, a single light bulb hangs from the ceiling. In the background, a wooden table and a chair are visible. The overall mood is moody and artistic.

**AYASSE**  
STUDIO AYASSE GMBH | KÖNIGSTR 27 | 70173 STUTTGART  
39, JANGMUN-RO 9-GIL, YONSAN-GU, 04392 SEOUL  
[WWW.STUDIO-AYASSE.COM](http://WWW.STUDIO-AYASSE.COM) | [MAIL@STUDIO-AYASSE.COM](mailto:MAIL@STUDIO-AYASSE.COM)